

Data Transfer screen



- A. **Import Setup**
- B. **Export Setup**
- C. **Export Data**
- D. **Export Reports**
- E. **Manual Sync**
- F. **Upgrade Firmware**
- G. **View Files**
- H. **Advanced Options**

- Create Backup
- Restore Backup
- Export by Grower
- Export at Shutdown
- Export all Logs
- Export ISO XML



.AGSETUP Files

Used to transfer setup information from display to display or from SMS™ and display

- Allows full synchronization of the following file formats:
 - Management Data (Growers, Farms, Fields, Seasons, Operators)
 - Products and Product Mixes
 - Boundaries
 - Guidance Patterns
 - Marker Sets and Markers
 - Configurations



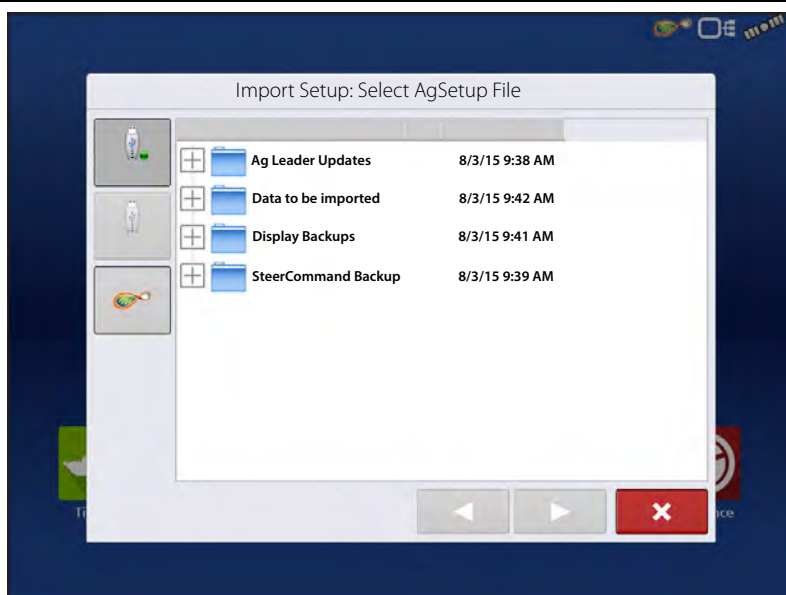
NOTE!: Do not use the IBK to “clone” a display. Use AGSETUP or make a new setup.

Import .AGSETUP file from AgFiniti® or USB

The File Selection screen opens. Use the scroll bar to find the file to import.

Export .AGSETUP file to AgFiniti or USB

Use to transfer setup information from display to display or from SMS and display.



.AGDATA files

Used to transfer data to management software from the display via AgFiniti or USB.

- Includes all the necessary data to fully archive in SMS
- Includes recorded operation data
- Products Used
- Boundaries
- Equipment Used
- Marks Logged
- Guidance Patterns
- Flexible export options
- Able to export by Grower

Exporting Logged Data

After a field operation is completed, data can be exported to USB or AgFiniti. This can be accomplished by pressing the “Export Data” button within the Data Transfer screen (“[Data Transfer screen](#)” on page 31) and selecting the export location. Under the advanced options menu within the Data Transfer screen, users can also choose to export by grower/event and/or at display shut down.

- Pressing the “Export Data” button will trigger all data to be exported based on the last time the export button was pressed. After data has been exported to the external device, it is still retained within the displays memory.
- If previously exported data needs to be retrieved from the display it can be accomplished by pressing the “Export All Logs” button under advanced options within Data Transfer. Export all logs will export all logged data stored on the display.
- Data on the InCommand™ displays is not automatically deleted after any export operation. Users have the ability to delete old seasons (“[Season tab](#)” on page 16), which includes the logged data, to free up memory on the display.

Export .AGDATA file

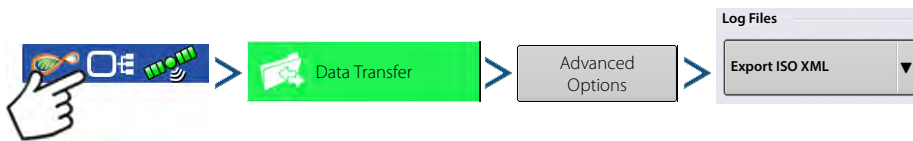
ISO XML export

This function enables the export of data files in the TASKDATA.XML format.

Supported operations

- Multi-Product and Multi Channel liquid and Granular operations
- Rate Logged with ISO Modules
- Flow Logged with Proprietary Modules
- Single channel/drive planter
 - Planter sections are mapped
- Site Verification
- Summary totals

Enable ISO XML Export



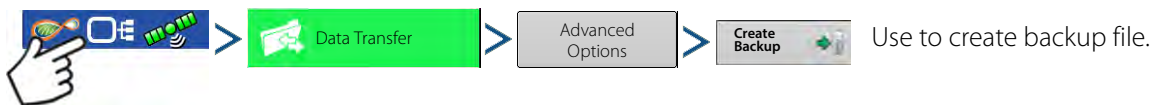
Display Backups

A display backup creates an exact clone of a display's current contents. This includes all management information, configurations, and logged data on the display. Backups should be taken at regular intervals through an operating season to minimize any data loss in the event of a display failure. Display backups can only be used on a like display with the same or newer firmware than the backup was created on. Example: a display backup from an InCommand 800 cannot be installed on an InCommand 1200 display or vice versa. When a display backup is restored onto a display it will overwrite all existing data on that display. Users moving data between multiple displays should use an .agsetup file instead of a backup file to accomplish this task. .Agsetup files have the ability to merge and add data to a secondary display so there will be no risk of data loss.

ibk3 files

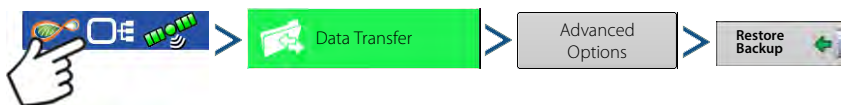
- System backup file. Backup files are written to USB drive.

Create Backup File (USB drive Only)



i Ag Leader recommends backing up the display regularly to prevent/minimize data loss in the event of a display failure.

Restore Backup File



Upgrade Firmware

.fw3

- Firmware upgrade file for the display and control modules. Install firmware updates from USB.

