

September 25, 2024

VOLUME 129

# Weekly Wednesday

Department of Educational Psychology



## What's Inside:

- 1) Top Stories
- 2) Announcements
- 3) News
- 4) Diversity, Equity, & Inclusion
- 5) Clinic Corner
- 6) The Week Ahead



**CORNCHELLA**

# Save the date!

UNL'S HOMECOMING CELEBRATION WILL TAKE PLACE SEPTEMBER 30-OCTOBER 5  
SEE THE FULL SCHEDULE OF EVENTS:

[HTTPS://HOMECOMING.UNL.EDU/SCHEDULE-EVENTS/](https://homecoming.unl.edu/schedule-events/)

## EDPS HOMECOMING TAILGATE



As part of this year's homecoming celebrations, Sue & Scott have graciously donated their tailgating spot for the homecoming game on October 5th.

Kickoff for the game is 3pm. Join us at 12pm Saturday, October 5th for walking tacos, cornhole, and a great time!

The event is **BYOB** and **BYOC**  
(bring your own beverage; bring your own chair)

Please utilize the sign up sheet below to indicate what food item(s) you plan on bringing to the event.

SIGN UP SHEET:

<https://go.unl.edu/edpstailgate>

If you have any questions, please email Ali Shull at [ashull3@huskers.unl.edu](mailto:ashull3@huskers.unl.edu)



# REMINDER!

You must email your signed/completed COMPS registration form no later than Friday at 4pm.  
**LATE APPLICATIONS WILL NOT BE ACCEPTED!**



## Young Adult Grief Group

Mourning Hope is starting a Young Adult Grief Group. Here's what you need to know:

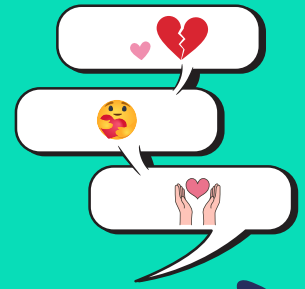
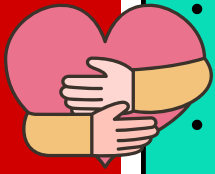
- This group will be 8 weeks long and will start on Sunday, Oct. 6th
- The group will happen weekly on Sundays with an optional 6pm study hall and the actual group session running from 7-8:30pm
- This group is FREE and will happen at Mourning Hope's center (1311 South Folsom Street)
- "Young adults" is being defined as adults aged 19-30

### Please Share!

To learn more and/or register, visit:

<https://go.unl.edu/mourninghopesupport>

Questions? Email Paige Hespe at [phespe2@huskers.unl.edu](mailto:phespe2@huskers.unl.edu)



## 2024-25 Methodology Applications Series

### Supporting and Leveraging Robust Research Data Systems

This four-talk series is hosted by the Nebraska Academy for Methodology, Analytics, & Psychometrics and will guide students and applied researchers in developing, maintaining, and accessing high-quality data to promote rigorous and impactful research.

The first presentation will feature Lorey Wheeler, who will present on the topic of:

### Developing a Strong Research Data Infrastructure

This presentation will provide best practices and practical guidance for how to successfully manage your human subjects' quantitative data from project inception to completion. It will go through four crucial steps to be implemented through the life cycle of the project to support data analysis, sharing and archiving: planning, data documentation, database setup and data cleaning.



**Friday, Oct. 4th | 12-1:30pm | CPEH 312**

To learn more, visit: <https://mapacademy.unl.edu/training/2024/lorey-wheeler/>

Interested in being a group facilitator for EDPS 320: Happiness and Well-being through Positive Psychology?

## Sessions begin October 11th!

See previous Weekly Wednesdays for more information, or reach out to Chelsea Walker at [cwalker36@huskers.unl.edu](mailto:cwalker36@huskers.unl.edu)



## WOMEN'S SELF-DEFENSE CLASS

Have you ever felt unsafe while at the grocery store? Or walking to your car, even in broad daylight? You are not alone!

Kim Bowers is working on organizing a self-defense class provided by Swanson's Martial Arts. This class will most likely take place on a Wednesday evening in October and cost around \$10/person.

INTERESTED? REACH OUT TO KIM BY SEPTEMBER 30TH! [KBOWERS4@UNL.EDU](mailto:KBOWERS4@UNL.EDU)

## Professional Development Grants for Students

The CEHS Professional Development Grant Program aims to promote the scholarly and professional development of CEHS students. Grants awarded through this program provide funds for CEHS students to participate in a professional meeting, conference, or other professional development experiences.

**Individual awards of up to \$500 are possible!**

Applications for the Spring 2025 cycle will be accepted beginning **September 15th** until the **October 15th** deadline.



To learn more and/or apply, visit:

<https://go.unl.edu/cehsstudentgrant>

## 2025 National Behavioral Health Conference: Help and Healing Across the Continuum

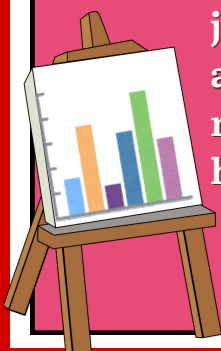
**NOW ACCEPTING PROPOSALS!**

This conference is scheduled for April 4, 2025 on the Boys Town campus in the Music Hall and their new Education Center. They are joining forces with our health care providers and will have a broader audience of physicians, including pediatricians, rheumatologists, neurologists, psychiatrists and more! They are also looking for 1 hour break out session talks and 20 minute flash talks.

Interested? **APPLY NOW!**

The deadline to apply is **OCTOBER 25, 2024.**

<https://www.boystownhospital.org/professional-education/call-for-proposals>



# DEMAC Meetings



& new email address!  
 Wanna chat with DEMAC? Meetings are held via Zoom every other Monday from 1-2pm.

There is an “open” portion to every meeting where students are invited to share concerns, feedback, or ideas with DEMAC!

### FALL 2024 MEETING SCHEDULE:

|                       |                       |
|-----------------------|-----------------------|
| Oct 7, 2024 01:00 PM  | Nov 18, 2024 01:00 PM |
| Oct 21, 2024 01:00 PM | Dec 2, 2024 01:00 PM  |
| Nov 4, 2024 01:00 PM  | Dec 16, 2024 01:00 PM |

DEMAC asks that any student who wishes to join a meeting for open hours please email [demac@unl.edu](mailto:demac@unl.edu) to let them know you plan on joining a meeting.

Zoom Link: <https://unl.zoom.us/j/92407153419>

**OPEN**

## EDPS Parent Support Room



The EDPS Parent Support Room is now **OPEN!** As part of our department’s commitment to DEI, we wanted to create a space where parents could work alongside their children should they need to come to campus with you. We are in the early stages of building this room, and we need your help!!

The parent support room is located in TEAC 210. We hope to fill this room with toys and supplies for kids to enjoy while they’re on campus with you!



If you find yourself unable to access the room, you can find a key at the following places:

- Zee’s Desk
- NEAR Center Front Desk
- Patricia’s Office (TEAC 213)

Have questions or want to donate?  
**TALK TO ZEE OR PATRICIA!**

### Wishlist:

- Art Supplies (markers, crayons, kid-friendly scissors, coloring books, etc.)
- Books
- Puzzles or board games
- Play rug
- World map/kids posters

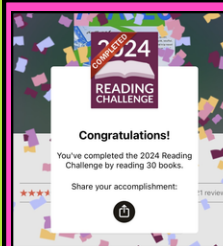
**Edith’s dog Jimmy got a new Husker jersey!!!**  
 How precious!!!!

**Kyle participated in his first international autoharp contest at the Walnut Valley Festival in Winfield, KS!**  
 This was his first time meeting other autoharpists! Kyle is excited to keep practicing to prepare to compete again in the future.  
**HARP YEAH, KYLE!**

## Weekly WINS-day



If it made you happy, LET’S CELEBRATE IT! Photos are not required! Visit the link below or scan the QR code to learn more & submit your wins.  
<https://go.unl.edu/weeklywins-day>



### Jules met their reading goal for 2024!

(but they’re totally going to keep reading)

Jules has read 30 books so far this year. Here are their top 3 favorites of the year (so far):

- *The Death of Vivek Oji* by Akwaeke Emezi
- *Doppelganger* by Naomi Klein
- *Raw Dog: The Naked Truth about Hot Dogs* by Jamie Joftus



PS - are you on Goodreads? Follow Jules!  
<https://www.goodreads.com/mebejules>

# NPA Fall Conference

## Autism and ADHD Assessments for Youth and Adults

Registration is now open for the NPA 2024 Fall Conference "Autism and ADHD Assessments for Youth and Adults", **Friday, Nov. 1**, with in-person attendance at the Scott Conference Center in Omaha and virtual attendance via Zoom.

**Featuring Whitney Strong-Bak, PhD and Lisa Neizke, PhD, BCBA**



This presentation will focus on practical insights to enhance diagnostic proficiency in evaluating adults for adult neurodevelopmental disorders. Differential diagnosis between autism spectrum disorders (ASD), ADHD, intellectual disabilities, and other mental health disorders in adults will be discussed. We will discuss how to effectively select evidence-based diagnostic tools, hone clinical interviewing skills tailored for adult ASD and ADHD assessments, and navigate gender and cultural variations in evaluation processes for culturally competent assessments.

**Friday, Nov. 1st | 8:30-4:30 Central | In-person & Zoom**

For more information/to register, visit: <https://www.nebpsych.org/event-5805596>

## Health Equity Grand Rounds

with Angela Cooke~Jackson

**Acknowledgement, Respect, and Preparation: Community Engagement and Participatory Design Research among Vulnerable Populations.**



Dr. Angela Cooke~Jackson will discuss how community engagement and participatory design research (CBDR) can support vulnerable communities in practice and policy, build their capacity, and create collaborations to address health challenges.

**THIS EVENT IS FREE AND OPEN TO THE PUBLIC!**

**Wed. Oct. 16th | 1pm | Via Zoom**

Register here: <https://go.unl.edu/roundscooke~jackson>

**need to request materials from CSPC?**

Microsoft Form Link:

<https://go.unl.edu/cspcmaterials>





## Upcoming Office Hours

Sept. 26–Oct. 2, 2024

Thurs. Sept. 26: 2–3pm

Fri. Sept. 27: 11am–12pm

Mon. Sept. 30: 1–2pm

Tues. Oct. 1: 12:30–1:30pm

Wed. Oct. 2: 1–2pm (via Zoom)

Susan Swearer, Ph.D., LP

Chairperson

Department of Educational Psychology  
University of Nebraska-Lincoln

## Need to reserve a room?



<https://tinyurl.com/TEACRoomRes>

\*Note: requests must be submitted no later than 48hrs before your reservation request



Questions? Ask Zee!



## Jules' Office Hours

& DEMAC Library Hours

Please email Jules to  
set up an appointment

Jules is not available to meet on Wednesdays

I hope your week is as  
wonderful as you are!

