



# Nebraska VineLines

UNIVERSITY OF  
**Nebraska**  
Lincoln | EXTENSION

University of Nebraska Viticulture Program

Editors: Dr. Paul Read, Professor of Horticulture & Viticulture and  
Stephen J. Gamet, Department of Agronomy & Horticulture

Late July 2015  
Issue XVIII – 5

## FIELD DAY FULL OF INFORMATION, GREAT ATTENDANCE

More than 35 attendees visited Oak Creek Vineyards on July 11th to learn about ground covers, innovative irrigation systems, fertigation, crop estimation, rejuvenation of a mature vineyard and recovery from cold temperature damage. In spite of the heat, participants asked lots of questions and stayed until well into the (HOT) afternoon to soak up information that was both helpful and informative. Scott Dvorak, Oak Creek vineyard manager, discussed the vineyard's new irrigation systems and fielded questions about the system and fertigation methods. Later in the day, Scott also provided insights into how they have retrofitted a mature vineyard with the goal of preparing the vineyard for potential machine harvest and other mechanization approaches. Ben Loseke, PhD Student in the University of Nebraska Viticulture Program (UNVP), showed the attendees his research that encompasses several ground cover selections and he demonstrated the pressure bomb and other specialized methodology for water potential evaluation in the vineyard. A lively discussion took place led by UNVP staff (Paul Read, Steve Gamet, Ben Loseke), regarding winter injury, its prevention and recovery from damage caused by various cold temperature events. It was pointed out that "winter injury" is often damage caused by failure of vines to harden adequately in the late summer and fall, thus "fall injury" might be the real culprit. Crop estimation was another timely topic that engaged participants, with much lively discussion ensuing.

Appreciation is expressed to **Eric Nelson**, Oak Creek Vineyard owner, and the Oak Creek staff

(**Scott Dvorak** and **Kara Sousek**, UNL student intern) for their generous assistance in helping make this field day such a resounding success. It was clear from the active participation of those in attendance that it was a successful educational experience that will help them improve their vineyard enterprises.

## WHAT HAPPENS WHEN YOU CAN'T SPRAY IN A TIMELY FASHION?

With the record-setting precipitation in May this year, grape growers faced a "vicious circle/Catch-22" – when excessive moisture occurs, it is necessary to spray fungicides more frequently, but when it rains a lot, it is hard to get into the vineyard. The result? Fungal diseases such as Phomopsis, Black Rot and Downy Mildew, can become rampant. It turns out that the University of Nebraska Viticulture Program's "Super Vineyard Technologist" (A.K. A., Steve Gamet) is only human and couldn't get all of our UNVP vineyards sprayed in the recommended timing. Therefore, our UNL East Campus demonstration vineyard was neglected in order to keep up with sprays on our other research vineyards. This however gave us an opportunity to evaluate a number of cultivars and a few un-named candidates from grape breeders, for susceptibility/tolerance to Downy Mildew and Black Rot, and just for fun, I also made observations on foliar Phylloxera symptoms. **All evaluations were based upon a 1 to 5 rating scale, with 1 being extreme damage or symptoms, while 5 would be exhibition of no symptoms (clean foliage and/or fruit).** Averages reported are for the number of vines evaluated, generally at least three clusters and three fully-expanded leaves per

vine. **Fruit Set numbers are for three clusters per vine, with 5 =perfect clusters and 1=no berries on the clusters.** Attached for your enlightenment are some representative photos.

Cultivar	# plants evaluated	Downy Mildew	Black Rot	Foliar phylloxera Severity	Fruit Set
Briana	6	2.0	2.2	2.0	3.8
Edelweiss	6	3.2	3.8	4.8	3.3
Einsett	2	1.8	2.8	4.5	4.0
Canadice	3	2.5	3.3	5.0	4.3
deChaunac	6	1.3	2.2	2.8	3.2
Frontenac	6	3.3	3.5	2.8	4.0
Frontenac Gris	6	2.8	3.0	2.4	3.8
La Crescent	6	3.4	3.7	2.4	3.8
Leon Millot	3	2.8	3.7	4.3	4.5
Marechal Foch	4	1.5	1.6	3.3	3.8
Marquette	7	2.9	2.1	2.0	3.9
Norton	6	4.4	4.9	5.0	4.6
Petite Pearl	2	2.0	1.0	4.0	4.0
Prairie Star	4	3.8	3.8	4.0	3.6
Reliance	2	1.0	2.3	5.0	4.0
Riesling	3	2.7	1.8	4.5	4.5
Rkatsiteli	2	z	1.5	5.0	z
Traminette	4	2.5	2.4	4.5	3.9
Vignoles	6	4.5	4.4	4.4	4.3
MN 1200	2	1.5	1.0	1.3	4.0
MN 1235	6	2.9	2.2	4.5	3.8
NY 95	3	3.5	2.5	2.3	3.3
z=young plants, no fruit					



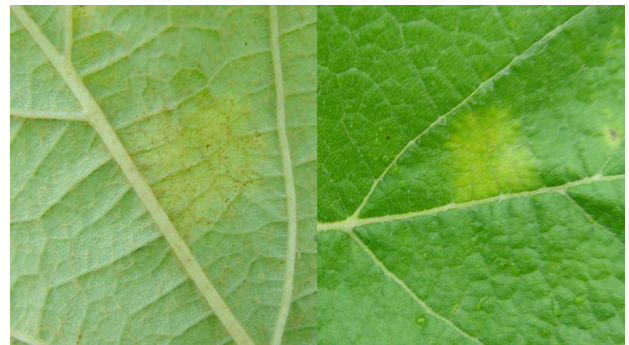
Frontenac Blanc



Marechal Foch



Briana



Norton 1



Frontenac



Norton 2



Reliance 2



Vignoles 1

## Reminder Calendar:

**July 23-25, 2015**, 40<sup>th</sup> ASEV – Eastern Section Annual Meeting, Clarion Hotel, Dunkirk, NY  
<http://www.asev-es.org/>

**July 26-29, 2015** ISHS International Workshop on Vineyard Mechanization and Grape and Wine Quality, Fredonia, NY <http://www.ishs.org/symposium/428>

**August 8, 2015** Recipe to Reality seminar, UNL, for further information, contact [jgivvord1@unl.edu](mailto:jgivvord1@unl.edu).

**September, 22 - 25** 2015 International Master Gardeners Conference, Mid-America Center, Council Bluffs, IA. Hosted by the University of Nebraska Lincoln and Iowa State University. Open to anyone interested in gardening. (Registration deadline is Aug. 31) <http://mastergardener.unl.edu/imgc2015>

**October 17, 2015** Fall University of Nebraska Viticulture Program Workshop, Lincoln, NE.  
Details soon: [viticulture.unl.edu](http://viticulture.unl.edu)

**November 11-14, 2015** 2015 VitiNord International Conference, Lied Lodge & Conference Center, Nebraska City, NE <http://www.vitinord2015.org/>

**November 13-15, 2015** Wine Tourism Conference, Portland, OR

**November 13, 2015** Grand Harvest Awards, **entry deadline**  
<http://www.winecompetitions.com/#nav=enteronline>

**November 17-18, 2015**, Grand Harvest Awards Judging  
<http://www.winecompetitions.com/#nav=grand-harvest>

**November 18-20, 2015** Wine Tourism Conference, Leesburg, VA,  
[www.WineTourismconference.org](http://www.WineTourismconference.org)

**January 26 – 28, 2016** Unified Wine and Grape Symposium, Sacramento Conv. Ctr., Sacramento, CA  
<http://www.unifiedsymposium.org/>

**February 4 – 5, 2016** Midwest Grape & Wine Symposium – Sacramento Convention Center, CA

<http://www.unifiedsymposium.org/>

**February 11 – 13, 2016** Cold Climate Conference – Hyatt Regency, Minneapolis, MN

<http://www.mngrapes.org/>

**February 28 – 29, 2016** Iowa Wine Growers Association Annual Conference – Prairie Meadows Hotel –

Racetrack & Casino, Altoona IA. Details later here: <http://iowawinegrowers.org/>

**March 3 – 5, 2016** Nebraska Winery & Grape Growers Forum & Trade Show – Omaha Marriott

<http://agronomy.unl.edu/viticulture/>

**March 9 – 11, 2016** Eastern Winery Exposition – Lancaster County Convention Center – Lancaster, PA:

<http://easternwineryexposition.com/>

### ***Save the Date***

**March 3 to 5, 2016** 19<sup>th</sup> Annual Winery and Grape Growers Forum and Trade Show, Omaha Marriott

---



Extension is a division of the Institute of Agriculture and Natural Resources at the University of Nebraska–Lincoln cooperating with the counties and the United States Department of Agriculture.

University of Nebraska–Lincoln Extension educational programs abide with the nondiscrimination policies of the University of Nebraska–Lincoln and the United States of America.