
The Colorado Grape Industry – Lessons for Nebraska?

Horst Caspari
Colorado State University
Western Colorado Research Center
Grand Junction, CO 81503
Ph: (970) 434-3264
www.colostate.edu/programs/wcrc/Vithome.htm

Colorado – The Centennial State

Land area: 103,642 sq. mi. (8) NE 76,824 (15)

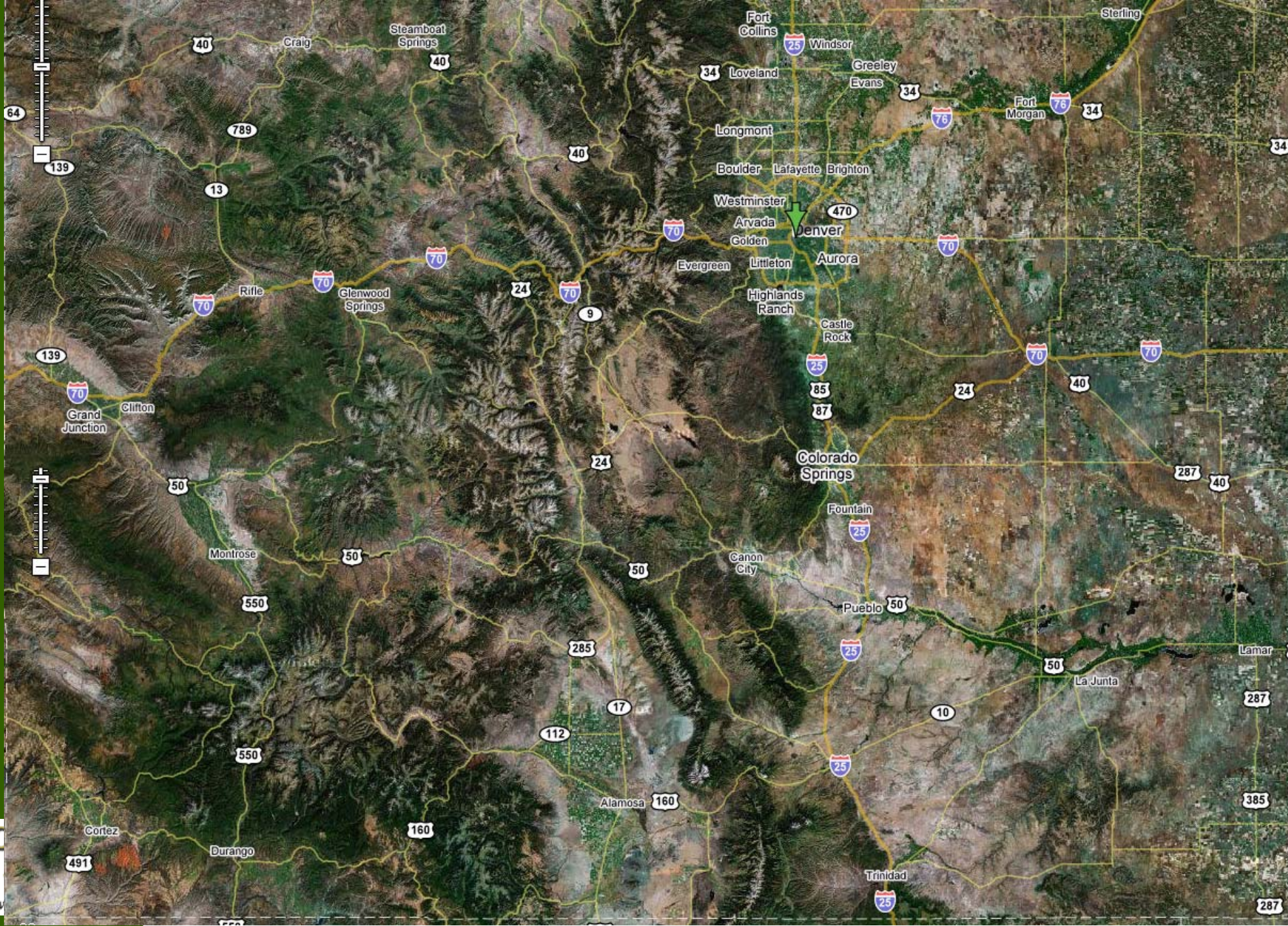
Population (2011 est.): 5.117 Mio NE 1.842

10-yr change: 16.9 % NE 6.7 %

Highest point: Mt Elbert, 14,433' NE Panorama Pt. 5,424'

Lowest point: Arikaree River, 3,315' NE Richardson County 840'





Colorado Agriculture

Employment¹: >100,000

Farms²: 36,100

Acreage²: 31.2 million

Average farm size²: 864

¹2007 Census of Agriculture

² Colorado Agriculture Statistics 2011

Colorado Ag Facts 2007

Colorado Agriculture Value of Agricultural Products Sold by County Data from 2007 Census of Agriculture, USDA

Data for * Counties
 #57-Broomfield \$958,000
 #60-Denver \$561,000
 #62-Clear Creek \$127,000
 #64-San Juan No Data Available

Colorado Ag Facts

Value of all agricultural products sold in 2007 totaled \$6 billion.

Agribusiness contributes \$16 billion to the state economy each year and employs more than 100,000 people.

There are 37,054 farms in the state encompassing nearly 32 million acres.

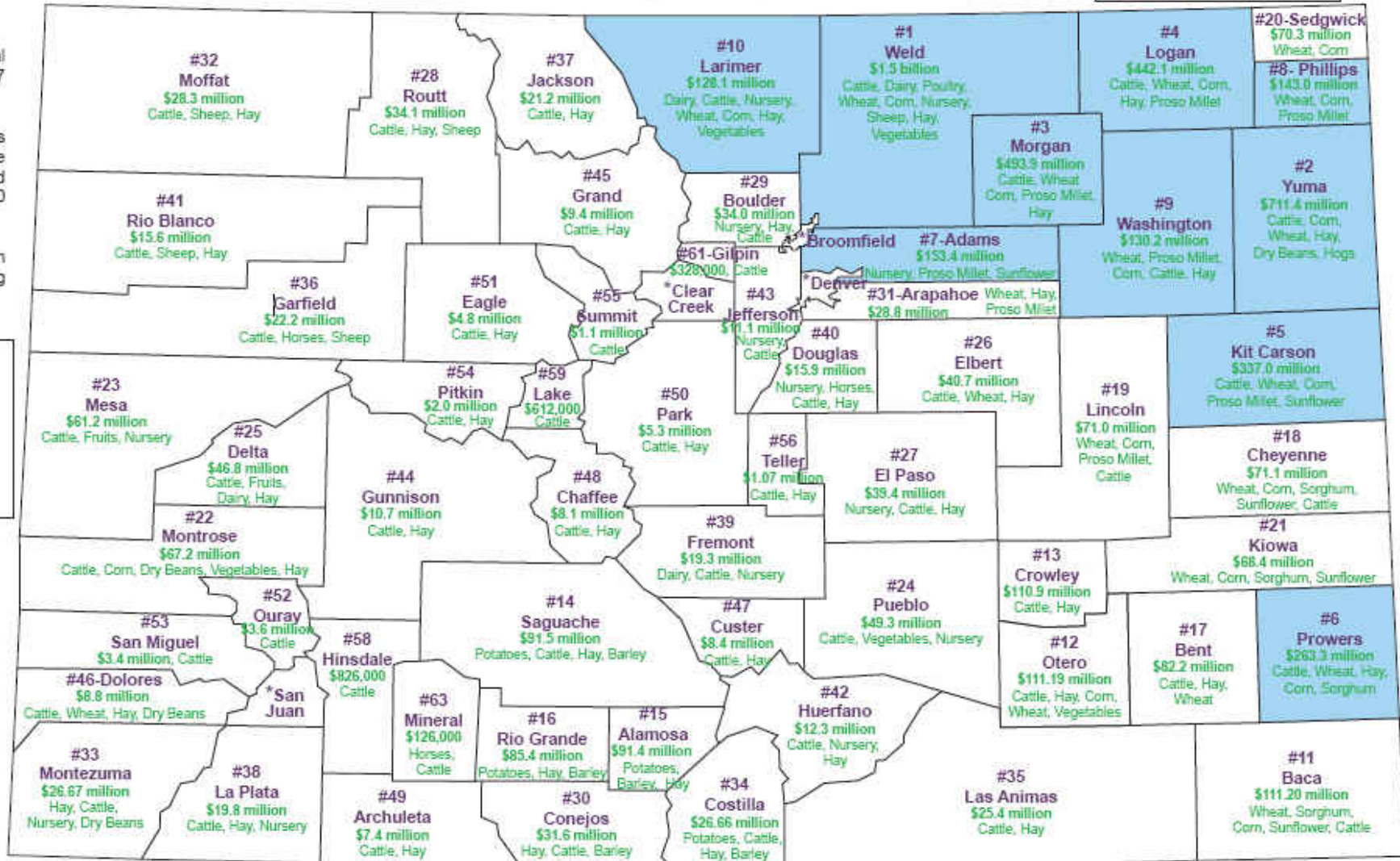
LEGEND

County Rank and Name
 Total Value of Agricultural Products Sold
 Top agricultural products

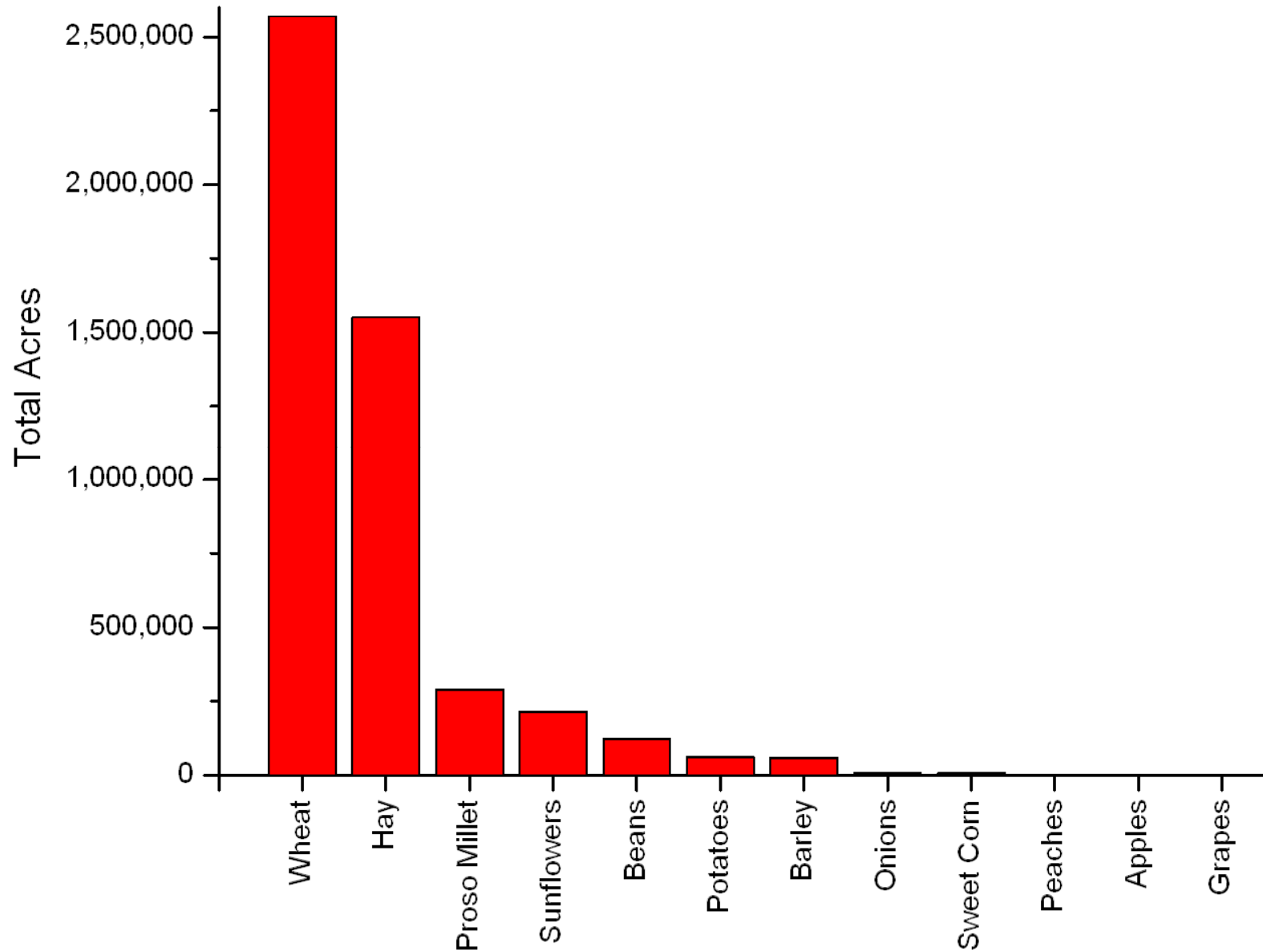
Shaded areas are top ten agricultural counties in Colorado.



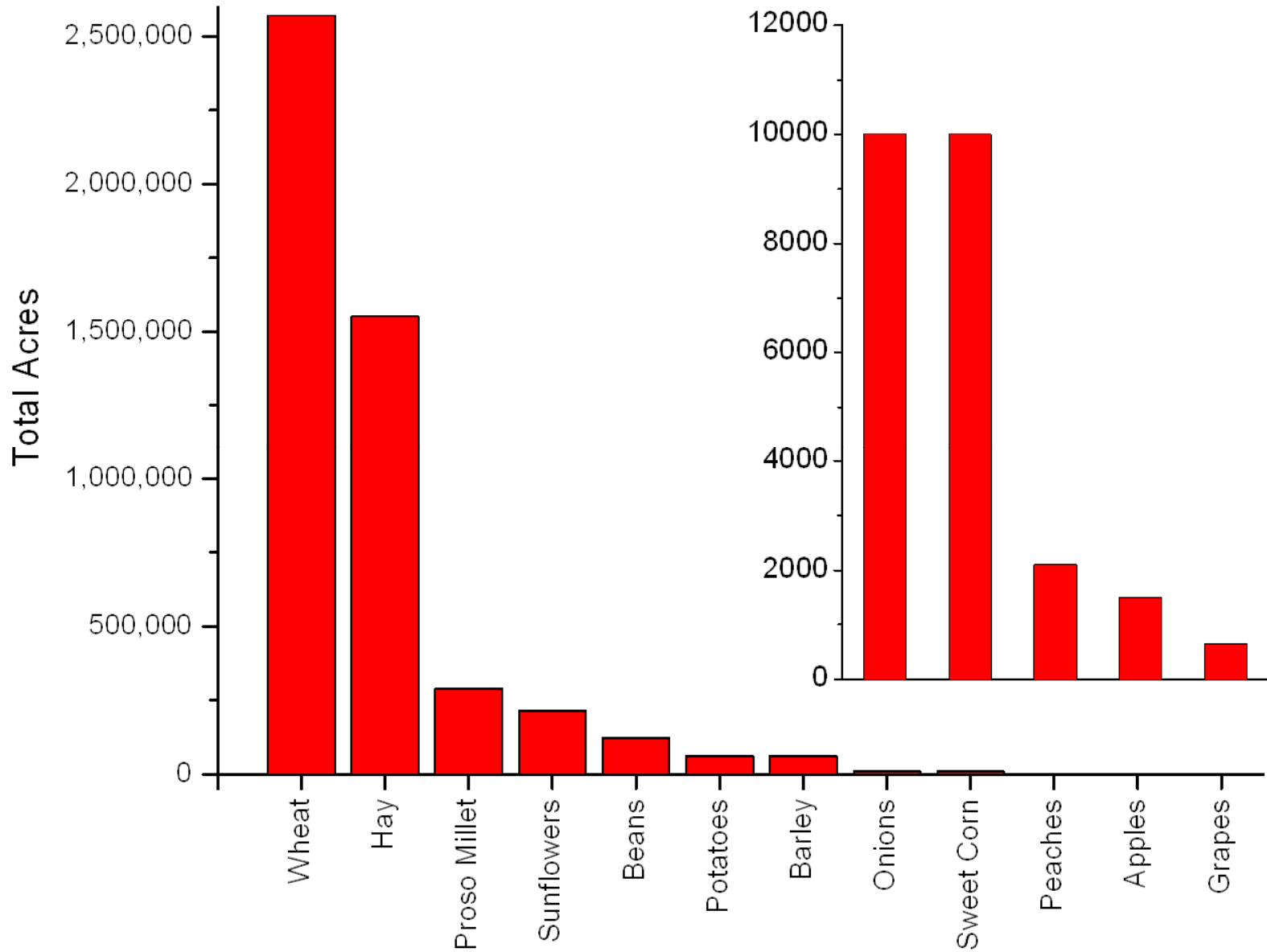
DEPARTMENT OF AGRICULTURE
 700 Kipling Street, Suite 4000
 Lakewood, CO 80216
 Phone (303) 239-4114
 Fax (303) 239-4125
 E-mail: markets@ag.state.co.us
 www.coloradoagriculture.com



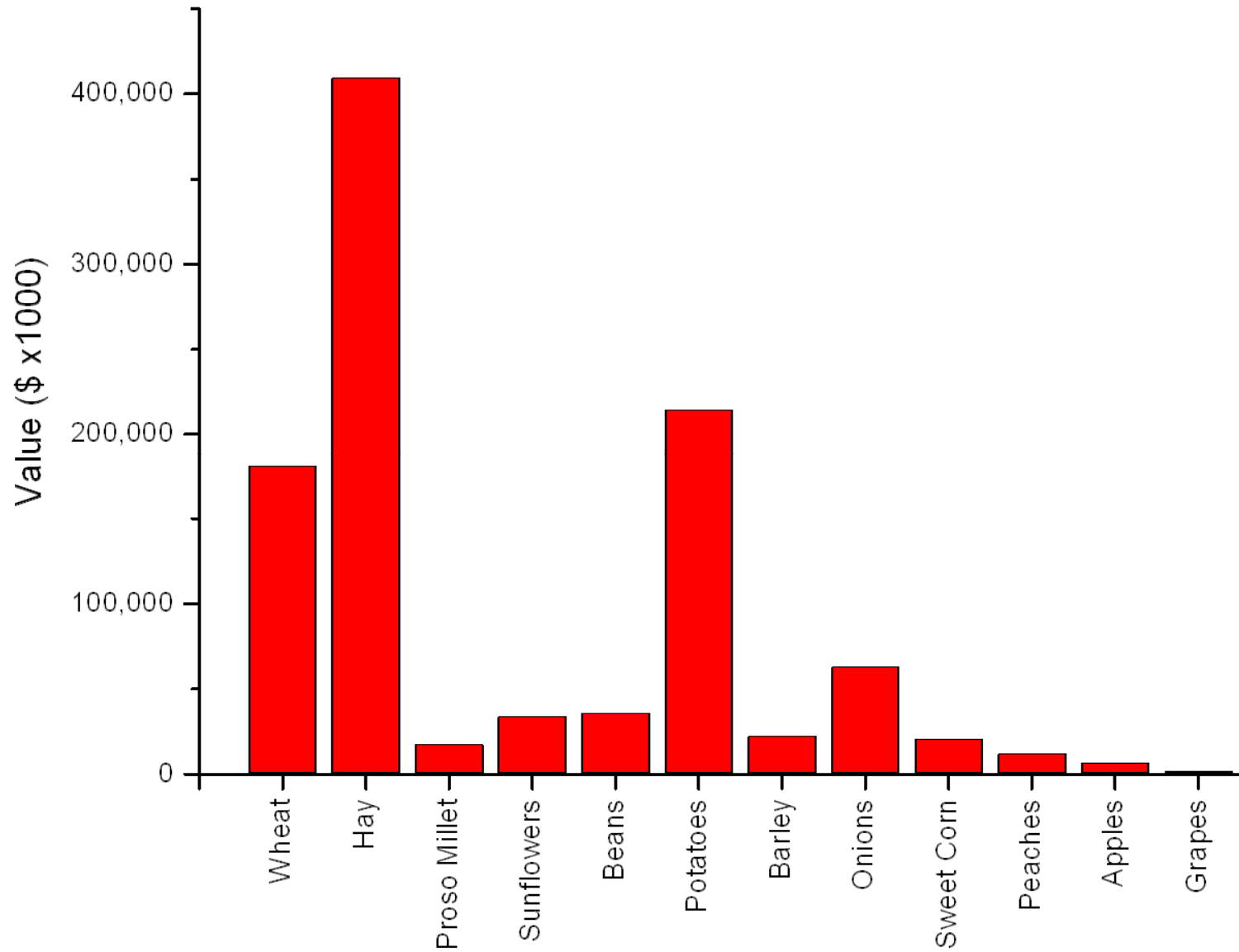
Colorado Agriculture 2005



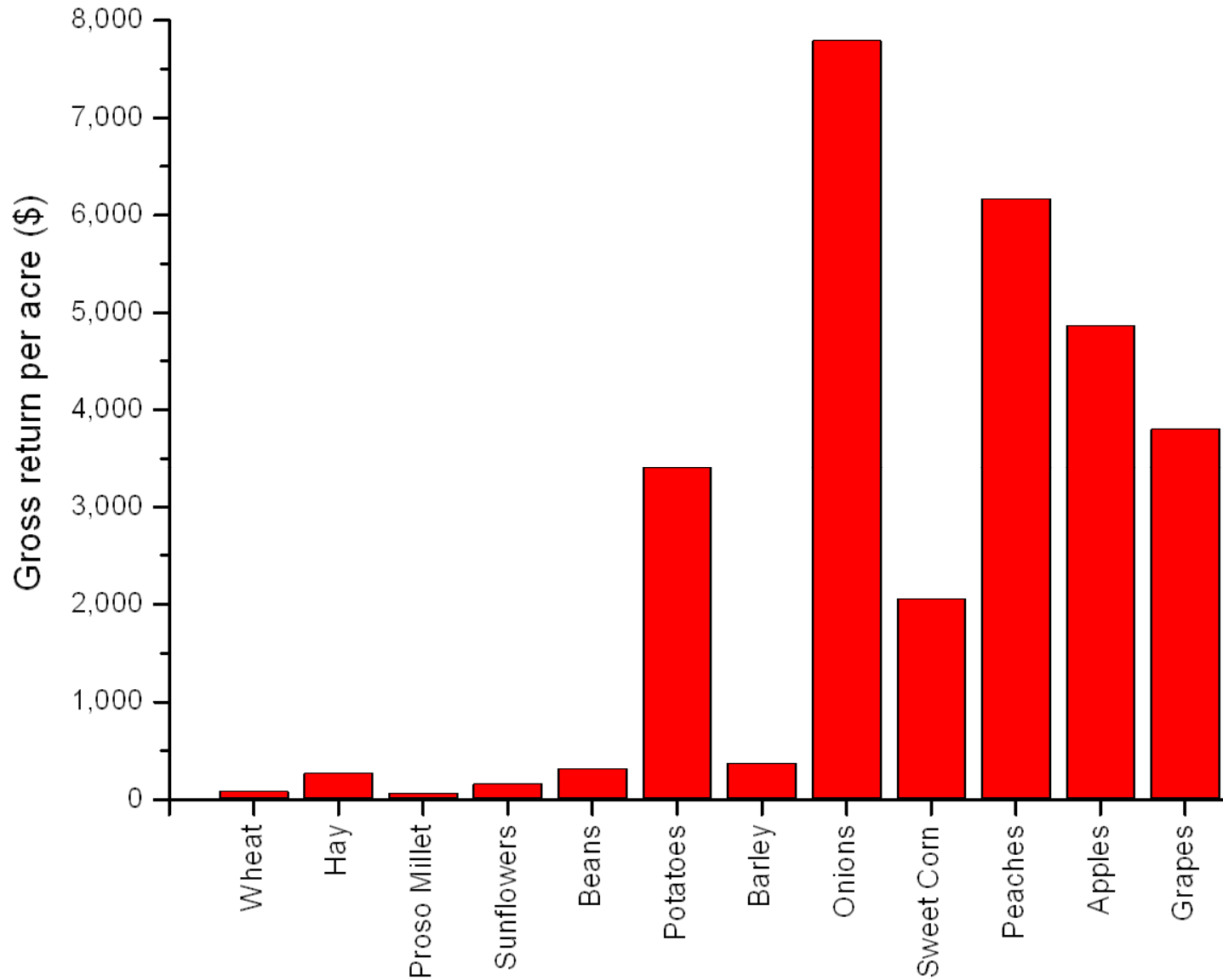
Colorado Agriculture 2005

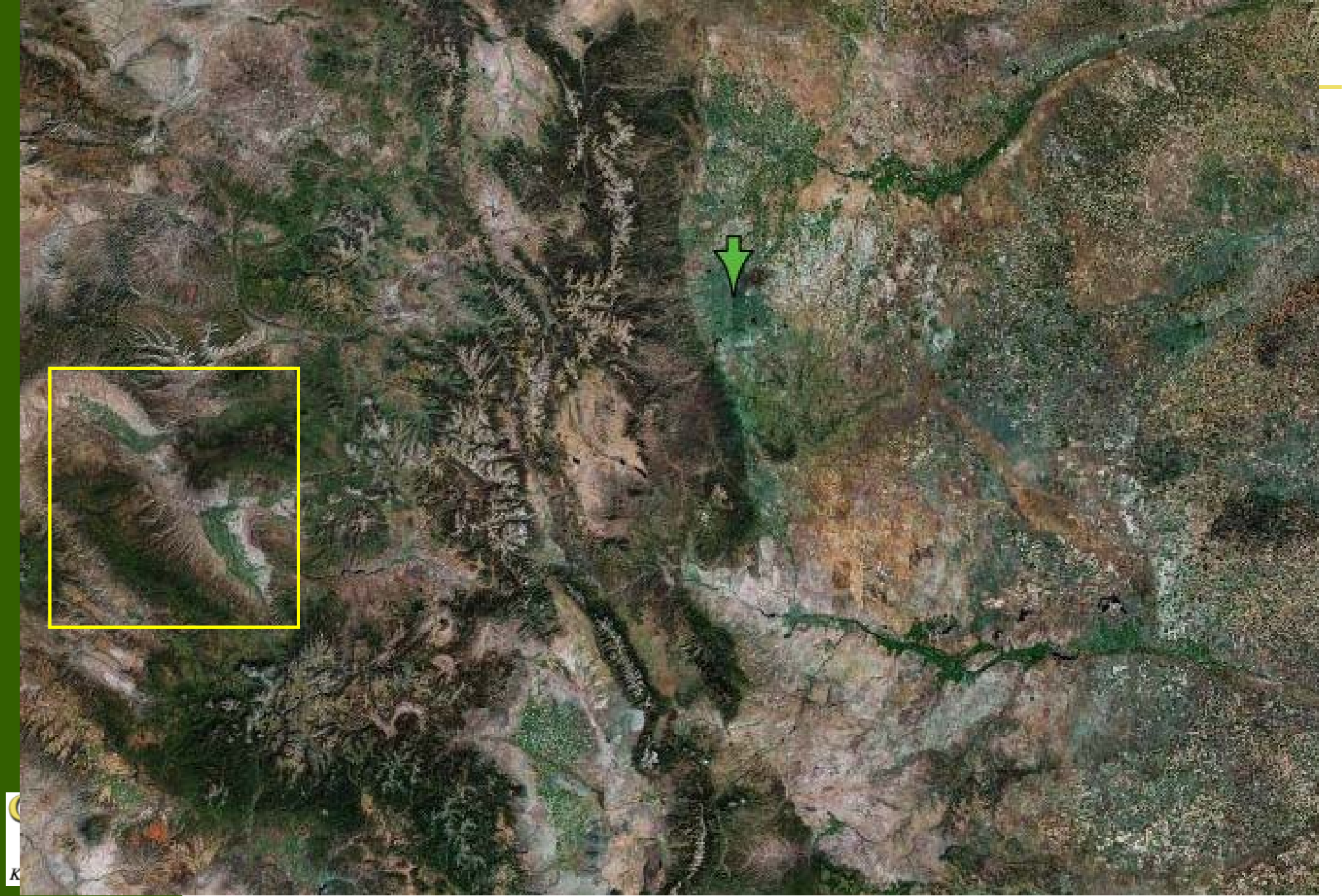


Colorado Agriculture 2005



Colorado Agriculture 2005





K

Colorado grape & wine - A short history

1882 - Irrigation canal introduced into Grand Valley

1883 - Arthur Pabor plants grapes and fruit near Fruita

1890 - Governor Crawford plants 60 acres of grapes and other fruit near Palisade

1899 - Colorado grape harvest of 293 tons
Wine production of 1,744 gallons

Colorado grape & wine - A short history

1909 - Colorado grape harvest of 519 tons
355,000 vines planted on 1,034 farms

1916 - Prohibition statute enacted



Colorado grape & wine - A short history

1933 - 18th Amendment is repealed



Colorado grape & wine - A short history

1968 - Ivancie Winery opens in Denver

Gerald Ivancie encourages growers in the Grand Valley to plant grapes

1973 - CSU begins vineyard research

Four Corners study published in 1980

1977 - Colorado General Assembly enacts the



Colorado Limited Winery Act (12-47-403)

Colorado grape & wine - A short history

1978 - Colorado Mountain Vineyards (today Colorado Cellars) opens

1982 - RMAVV formed (today CAVE)



1983 - Pikes Peak Vineyard opens

1985 - Plum Creek Cellars opens

1988 - Carlson Vineyards opens

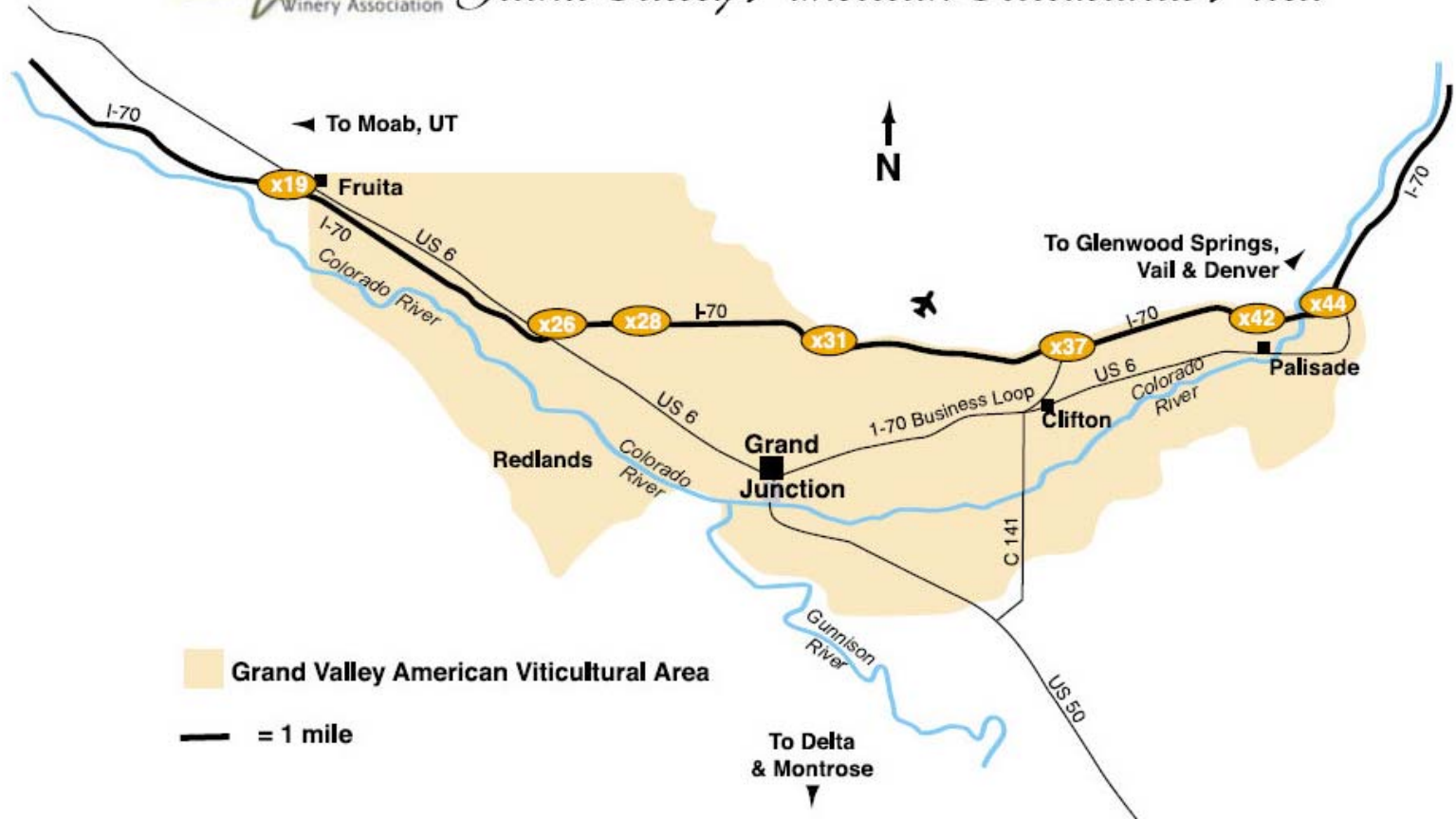
Colorado grape & wine - A short history

1990 - General Assembly enacts the Colorado Wine Industry Development Act (35-29.5-101)  which creates the Colorado Wine Industry Development Board (CWIDB)

- Grand River Vineyards opens

- Grand Valley AVA established

Grand Valley AVA



Colorado grape & wine - A short history

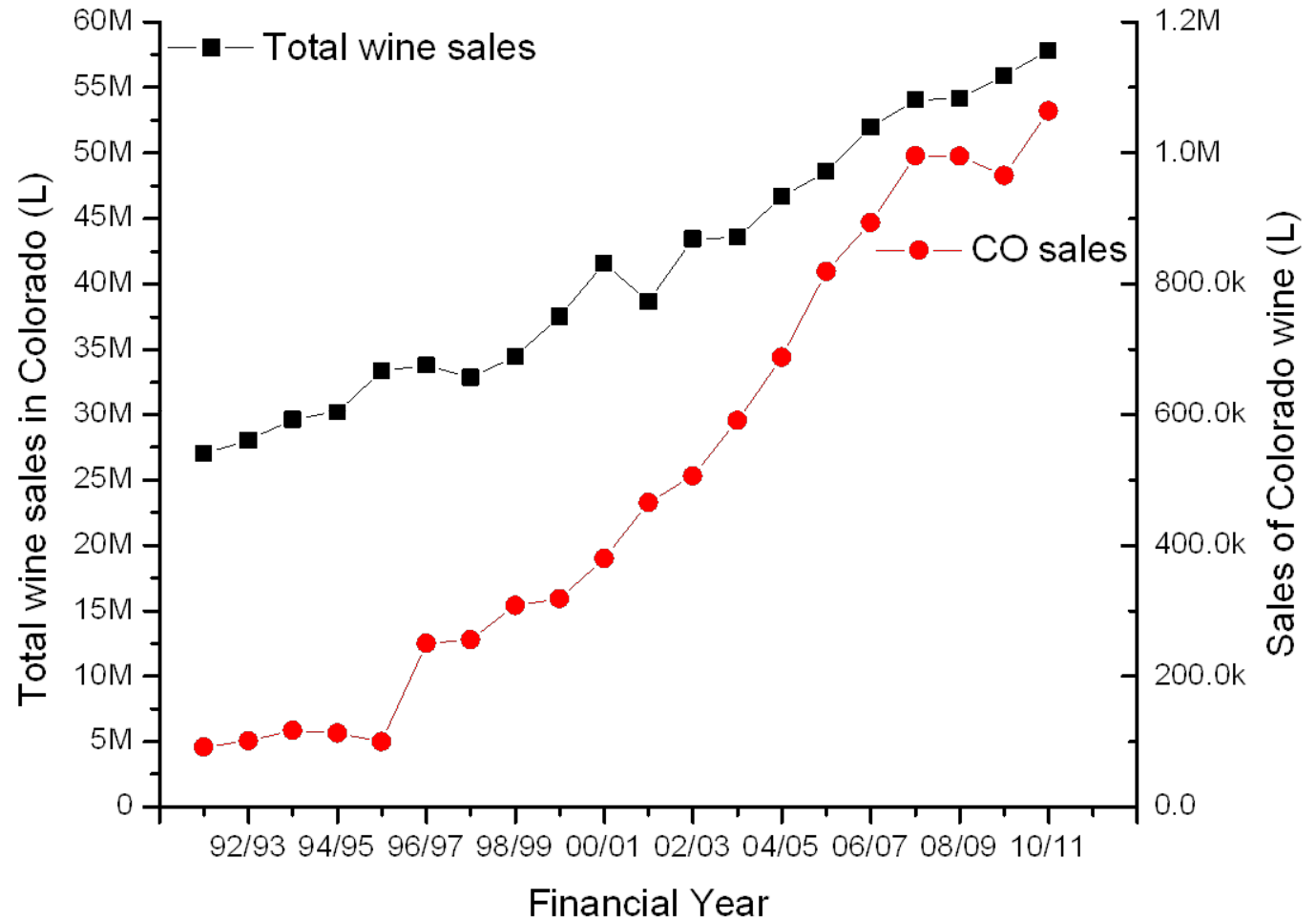
1991 - 1999 26 new wineries open

2000 – 2012 ~80 new wineries open

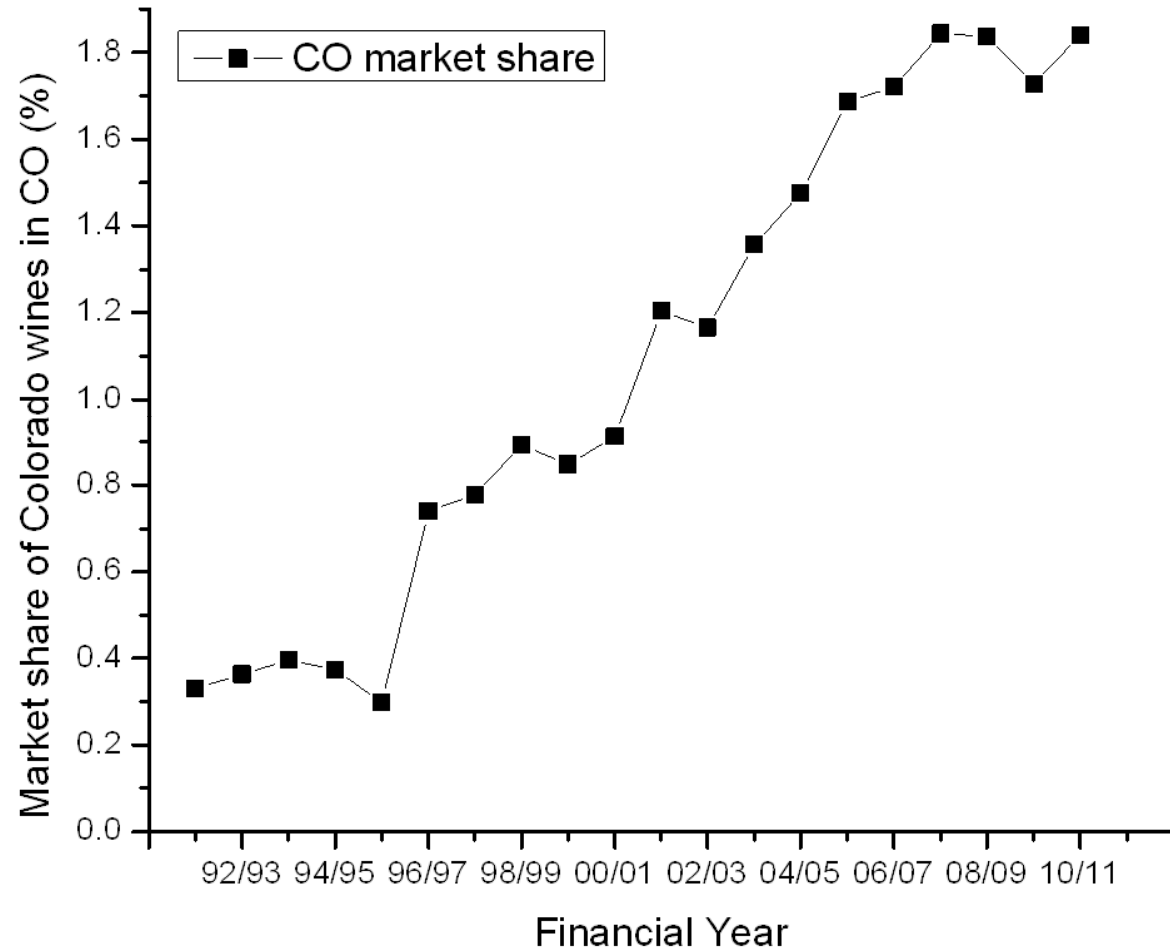
2005 - General Assembly amends the Colorado
 Limited Winery statute

2012 – more than 100 wineries licensed in CO

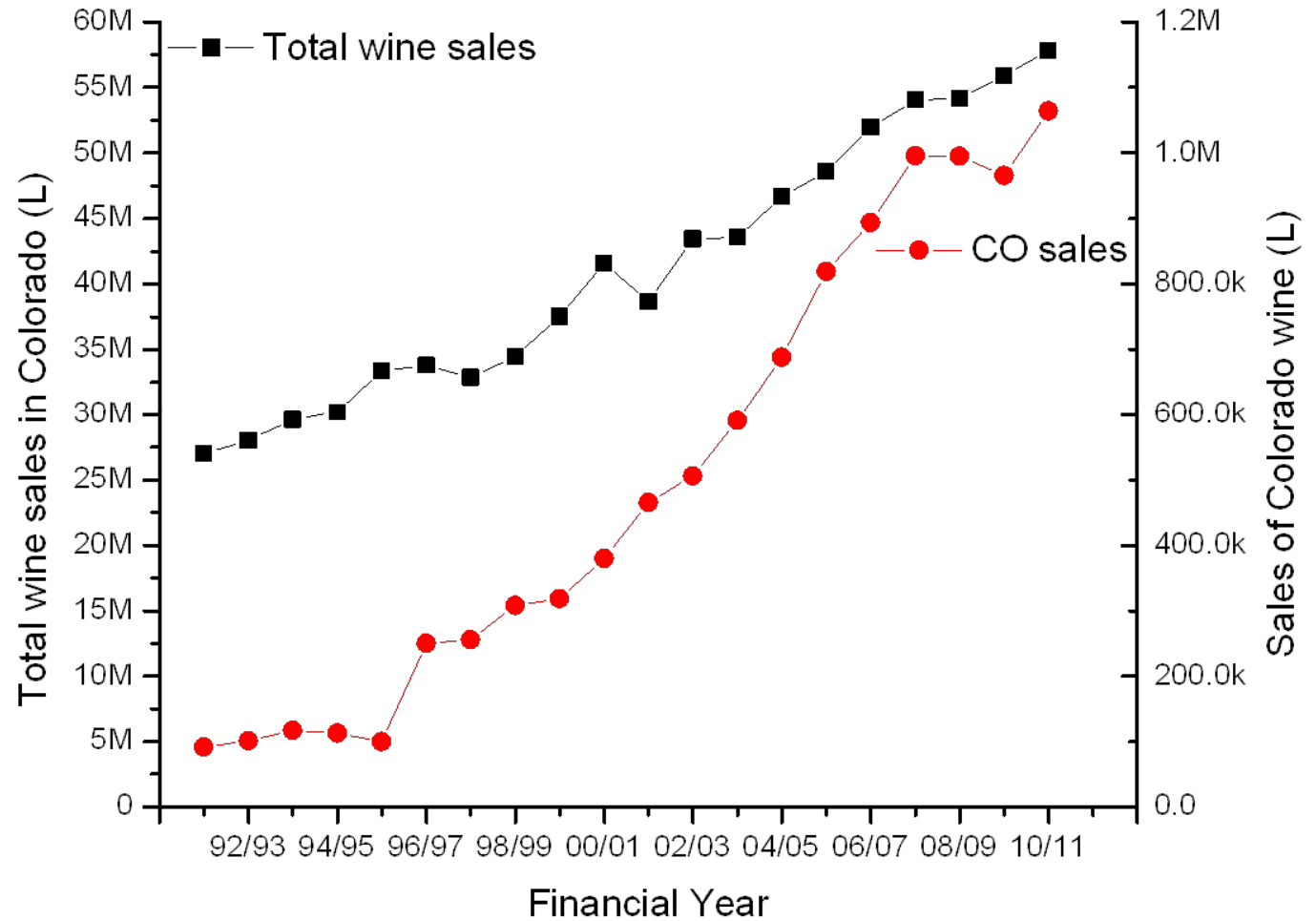
Colorado wine industry – an overview



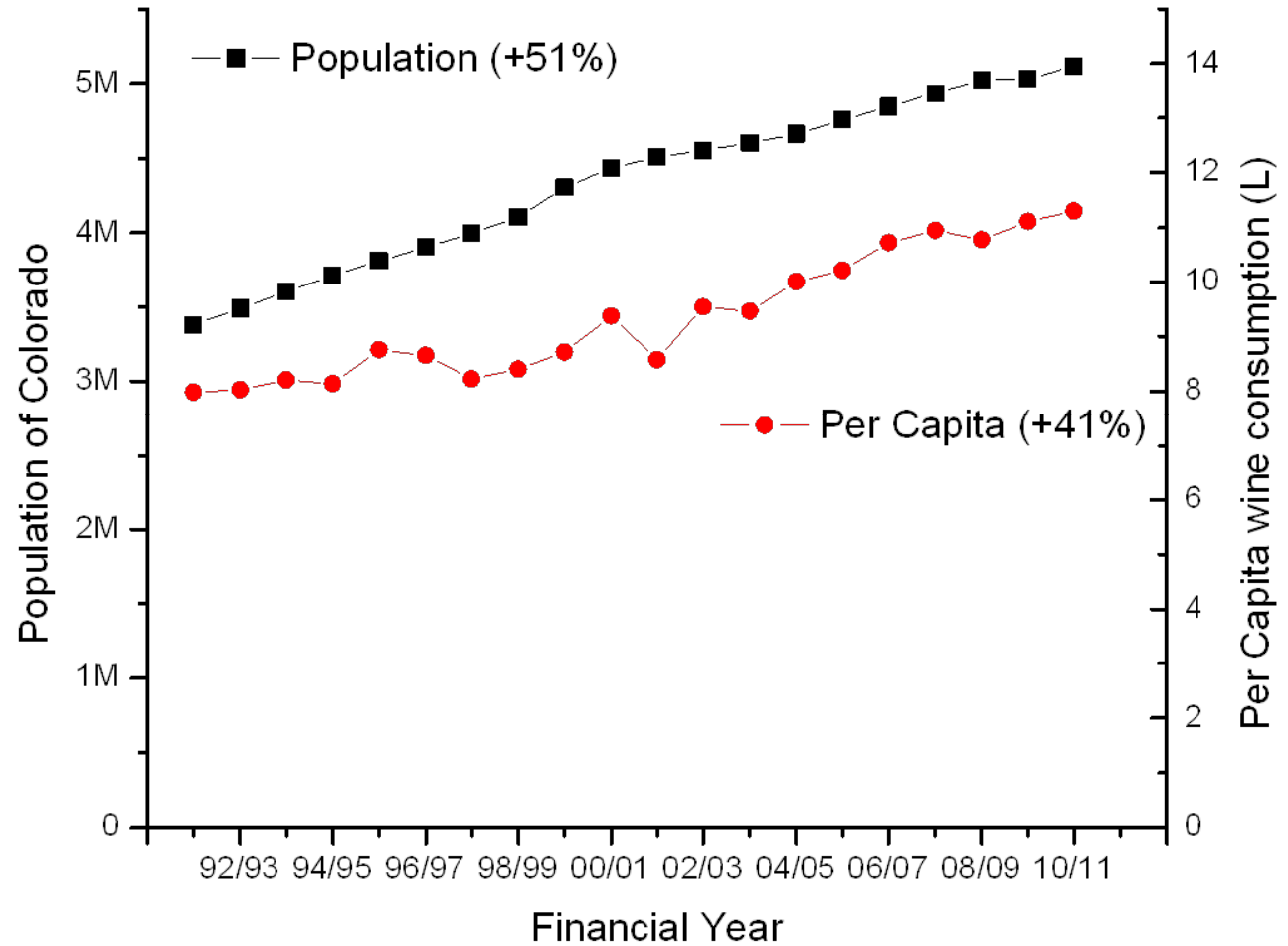
Colorado wine industry – an overview



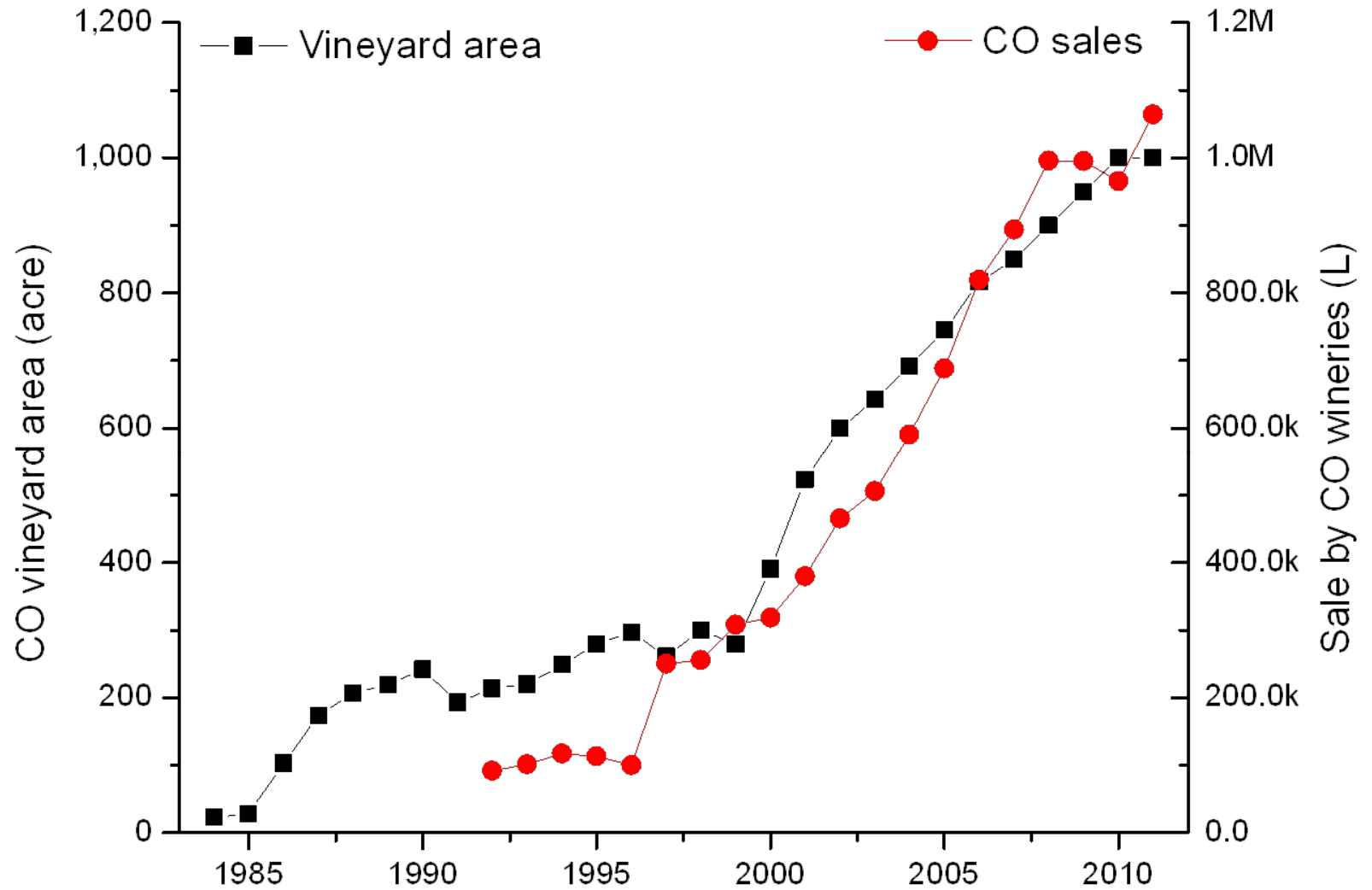
What drives the sale increase?



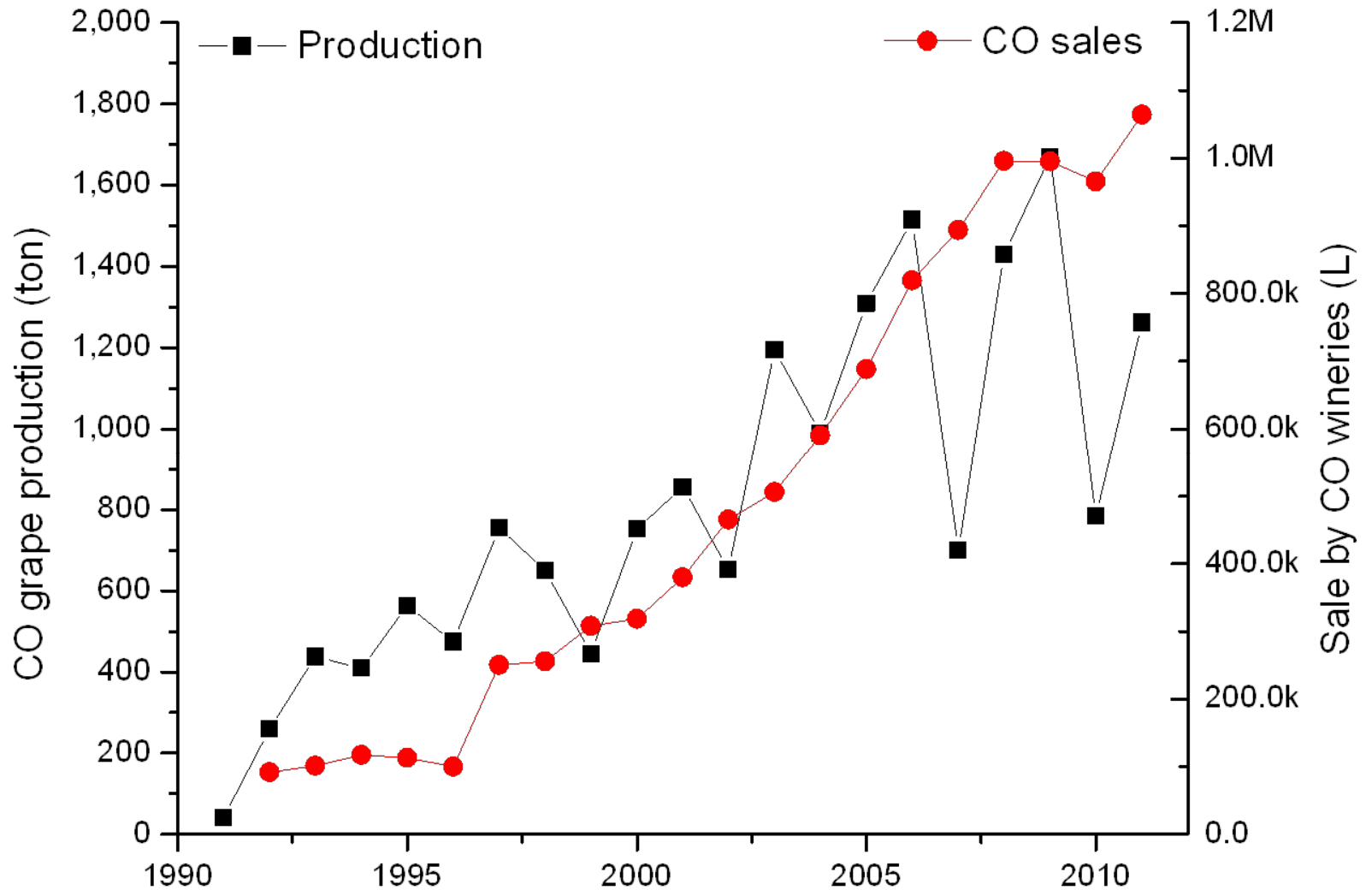
What drives the sale increase?



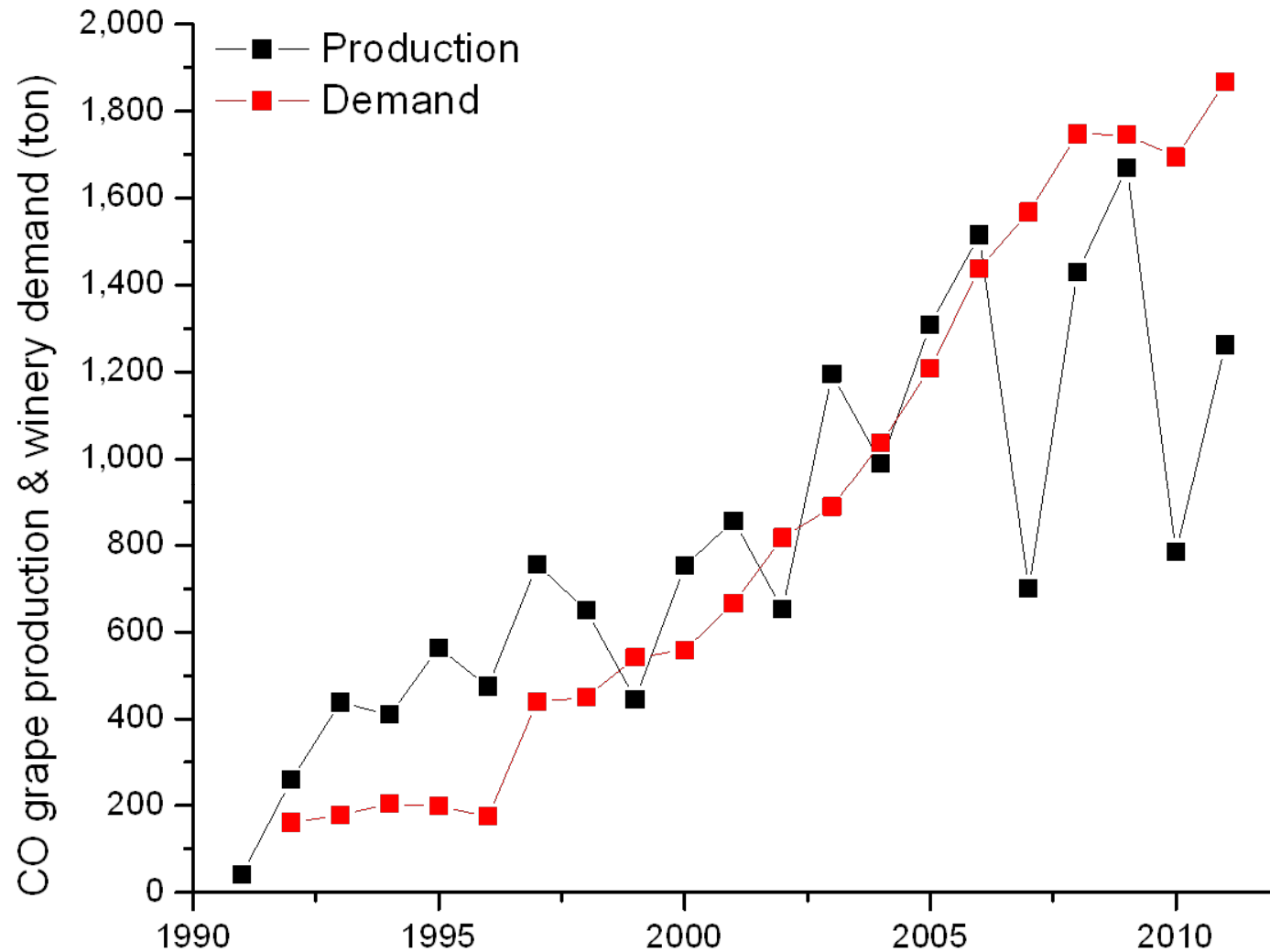
Colorado wine industry – an overview



Colorado wine industry – an overview

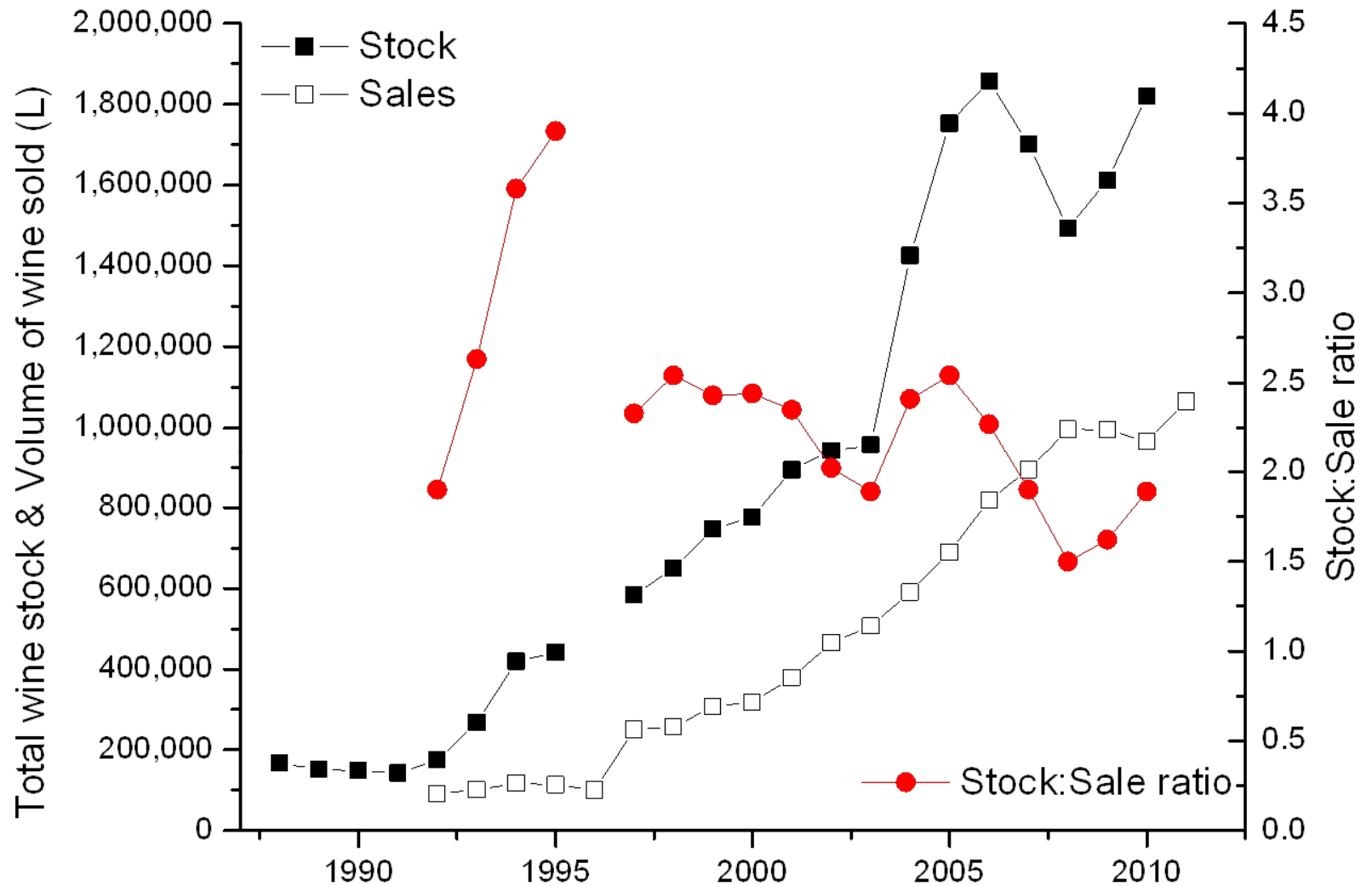


Colorado wine industry – an overview



Assumption: 570 L (150 gal) per ton of grapes

Colorado wine industry – an overview



Source: TTB, CO Dept. of Revenue

Where are the vineyards in Colorado?

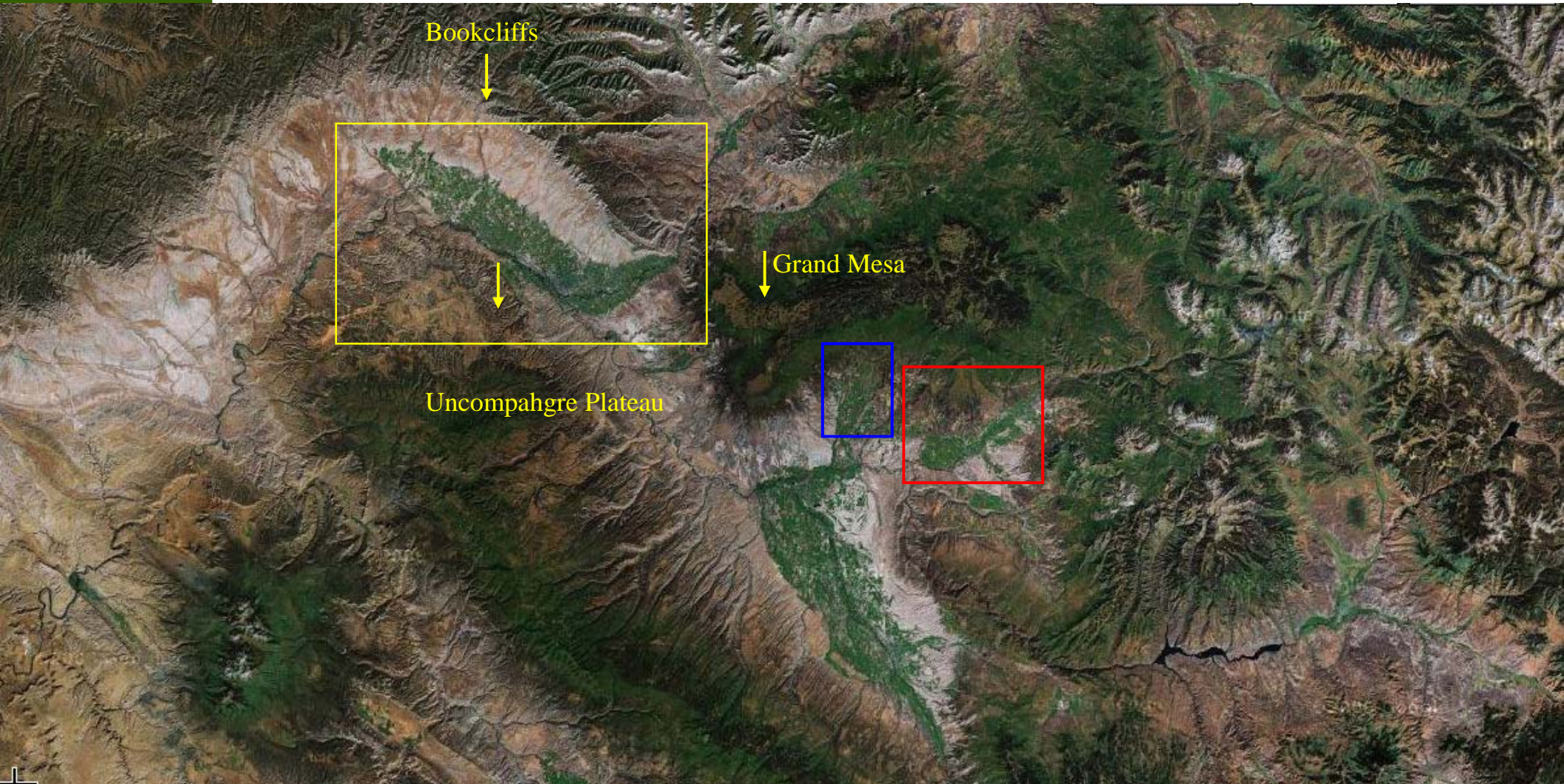
- Mesa County (Grand Valley AVA)
 - 66 % of acreage
 - 83 % of production
- Delta County (West Elks AVA, other areas)
 - 22 % of acreage
 - 11 % of production

Where are the vineyards in Colorado?

- Western Slope
 - 95 % of acreage
 - 99 % of production



K



Bookcliffs

Grand Mesa

Uncompahgre Plateau



















Thank you for your attention

Dr. Horst Caspari
Department of Horticulture & Landscape Architecture
Colorado State University
Western Colorado Research Center
Grand Junction, CO 81503
Ph: (970) 434-3264
<http://www.colostate.edu/programs/wcrc/pubs/viticulture/viticulturehome.htm>