

# The Southeast ASD Scoop

## Special points of interest:

- > Register now for the 2012 Nebraska ASD Conference!  
[www.unl.edu/asdconference](http://www.unl.edu/asdconference)
- > Struggling with behaviors? Read the article on page 2 for some quick questions to ask yourself.
- > Check out the assembly work task on page 2!

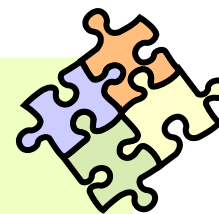
## What is Pivotal Response Treatment?

Robert and Lynn Koegel, the developers of Pivotal Response Treatment (PRT) will be the keynote speakers at the 9th Annual ASD Network State Conference on April 12th and 13th, 2012.

Pivotal Response Treatment, or otherwise known as PRT, is an evidence-based strategy that focuses on “pivotal areas” of intervention. The core components of PRT include training in the natural environment and family involvement. PRT is based on the principles of applied behavior analysis (ABA) and has shown to be effective especially in the areas of language, play and social interaction with children on the autism spectrum.

The pivotal areas of behavior that are addressed in PRT are motivation, multiple cues, initiations and self-management. The last pivotal area, empathy, is currently in progress.

The Pivotal Areas of PRT  
The first area, motivation, is the most important pivotal area that is addressed with PRT. When implementing PRT, the instructor follows the lead of the child (child choice), varies tasks, reinforces attempts, intersperses maintenance and acquisition tasks and uses natural reinforcers.  
The second pivotal area that PRT focuses on is responsivity to multiple cues. Students on



the autism spectrum typically struggle with over-selectivity, which is basically an inability to recognize all the cues in a given environment. Intervention includes incorporating multiple cues, such as size, color or shape when teaching objects.

The third pivotal area is self-initiations. Self-initiations consists of the student initiating some type of communication. Joint attention and shared enjoyment are included in self-initiations.

Continued on page 2

## Inside this issue:

What is Pivotal Response Treatment? (continued)	2
Questions to Ask Yourself if Dealing with Behaviors	2
Structured Teaching Workbox of the Month	2
Upcoming Training Opportunities	3
Mark Your Calendars—Upcoming Summer Trainings	3
Friend of Autism Award Call for Nominations	3
Save the Date!	4

## Registration for the 2012 Nebraska ASD State Conference is Now Open!

Join us for the 9th Annual ASD Network State Conference on April 12th and 13th, 2012 at the Cornhusker Marriott in Lincoln, NE.

The keynote speakers on Thursday, April 12th are Robert & Lynn Koegel, developer of Pivotal Response Treatment. Thursday evening’s dinner event, will consist of the awards ceremony and the

showing of the movie, “Wretches and Jabberers”.

Friday, April 13th, Phillip Strain, will provide a keynote address on using peer mediation to support social and communication skills. Multiple breakout sessions will be offered throughout the conference.

Early bird registration rates for both days end on February 28th, 2012. One day registration rates are available for professional and family members.

To register for the conference, please go to <http://go.unl.edu/asdconference>

Questions? Contact Melissa at [mtrautman@esu6.net](mailto:mtrautman@esu6.net)

Continued from page 1...

Self-management is the last pivotal area to be addressed in PRT. Self-management is the ability to be aware of their own behaviors and the ability to self-monitor, modify and reinforce their own behaviors.

Empathy, a pivotal area that is currently being researched, is the capacity to recognize and/to some extent, share feelings that are being experienced by another person. Researchers expect that empathy will be added soon to the pivotal areas of PRT.

There are several resources for more information on PRT. If you are interested in learning more, please register for the ASD conference and attend the presentation from the creators of PRT, Robert and Lynn Koegel, on Thursday, April 12th, 2012.

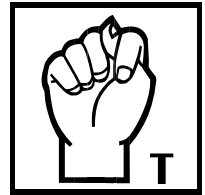
Here are a couple of online resources that you can access in the meantime.

1. Autism Internet Modules—create a username and password to access the training module on PRT. The website address is

<http://www.autisminternetmodules.org>.

2. The National Professional Development Center on Autism Spectrum Disorders (<http://autismpdc.fpg.unc.edu/content/briefs>) has evidenced-based practice briefs that includes directions and resources on how to implement PRT.
3. University of California, Santa Barbara Koegel Autism Center - <http://education.ucsb.edu/autism/index.html>

If you have any questions about PRT or the online resources, please contact Melissa at [mtrautman@esu6.net](mailto:mtrautman@esu6.net).



**Questions to Ask Yourself if You are Dealing with Behaviors**



Here are a couple of questions to ask yourself if you are struggling with where to start with a student displaying a variety of behaviors.

- What is the student doing that you wish he or she wasn't doing?
- What would you rather the student do? (When creating this list, be sure to list positive behaviors.)

Stop at this point and prioritize the behaviors that are the most important for the student's success in the educational environment. The first two behaviors that are listed should be the behaviors that the team should start working on with the student. Complete the following questions.

- What skills does the student need to accomplish the wanted behaviors?

- How can the team teach the student those skills?
- Who will teach the student the skills that he or she needs?
- When will the teaching of the skills start to be implemented with the student?

If you have any questions, please contact Melissa at [mtrautman@esu6.net](mailto:mtrautman@esu6.net).

**Structured Teaching Workbox of the Month—Assembly**

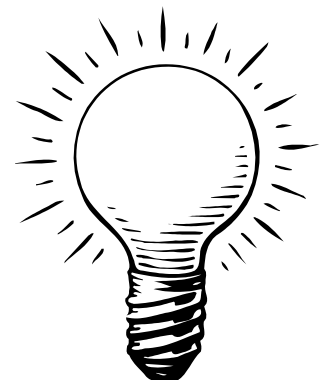


Here are the directions on how to create this vocational work-

1. At a hardware store, purchase several nut, bolts and washers that fit together.
2. Collect 5 small boxes or containers and glue them in a larger box or tray with three of the boxes in a row.
3. Trace one nut, bolt and washer on separate pieces

4. In one small box write "Start"; in another small box write "Finished"

Retrieved online from: <http://www.preschoolfun.com/pages/teachworkjobs.htm>



**Upcoming Training Opportunities**

**Got Behaviors??? Using Evidence Based Strategies to Improve Behaviors of Students with ASD**

Date: Feb 22, 2012  
 Location: ESU #3 6949 South 110th Street, Omaha NE  
 Time: 9:00 a.m.-3:00 p.m.  
 Presented by: Keery Wolf, BCBA

Presenter: Melissa Trautman, SE

**Executive Functioning Skills in Schools - Part 2**

Date: February 16<sup>th</sup>, 2012  
 Location: Webinar  
 Time: 1:00 p.m. to 3:00 p.m.  
 Presenter: Melissa Trautman, SE Region ASD Coordinator

Time: 8:30 p.m. to 3:30 p.m.  
 Presenter: Teri McGill, Metro Region ASD Coordinator and Melissa Trautman, SE Region ASD Coordinator

**Executive Functioning Skills in Schools – Part 1**

Date: February 9<sup>th</sup>, 2012  
 Location: Webinar  
 Time: 1:00 p.m. to 3:00 p.m.

**Social Skills for the Inclusive Classroom: Pre-K through 1<sup>st</sup> Grade**

Date: March 9<sup>th</sup>, 2012  
 Location: ESU 6, Milford

To register for any of these trainings or workshops, please follow the instructions on the flyer. All flyers are posted on the State ASD Network website and the SE ASD Blog.

**Mark Your Calendars—Upcoming Summer Trainings**

**JILL KUZMA IS BACK!**

Jill will be presenting on Social Thinking Strategies at ESU 3 in Omaha on June 12th—please plan to attend. More information will be coming soon!

Location: ESU #6, Milford  
 Time: 9:00 a.m. to 3:00 p.m.

**Introduction to Autism Spectrum Disorders**

Date: June 6th  
 Location: ESU #3, Omaha  
 Time: 9:00 a.m. to 3:00 p.m.

**Introduction to High—Functioning Autism/Asperger Syndrome**  
 Date: June 5th



**Friend of Autism Award Call for Nominations**

Each year at the Nebraska State ASD Conference, an educator is recognized and awarded the “Friend of Autism” award.

The Friend of Autism award is given to an educator that exhibits the following qualities:

1. Commitment—has the education of families, children

and youth with ASD as a primary focus

2. Vision: sees potential in all individuals with ASD
3. Innovation: is aware of empirically supported practices and uses resources creatively
4. Inspiration: displays positive interactions with stu-

dents with ASD, parents and peers

For more information, please visit the State ASD webpage—[www.unl.edu/asdnetwork](http://www.unl.edu/asdnetwork) or contact Melissa Trautman at [mtrautman@esu6.net](mailto:mtrautman@esu6.net). Deadline for nominations is March 2, 2012.

## Nebraska ASD Network

Melissa Trautman, MS. Ed  
210 5th Street  
Milford, NE  
68405

Phone: 402-761-3341  
Fax: 402-761-3279  
E-mail: [mtrautman@esu6.net](mailto:mtrautman@esu6.net)



N E B R A S K A  
**autism spectrum disorders**  
N E T W O R K

## We're on the Web!

Nebraska State ASD Network website:

[www.unl.edu/asdnetwork](http://www.unl.edu/asdnetwork)

Southeast ASD Network Blog:

<http://seasdnetwork.wordpress.com>

The ESU 6 webpage is currently under construction. Updated information will be coming soon!

## Save the Date!



The Nebraska State ASD Conference will be held on Thursday, April 12th and Friday, 13th, 2012 at the Cornhusker Marriott in Lincoln, NE. Information on how to register will be available in January 2012.

Mark your calendars!!

